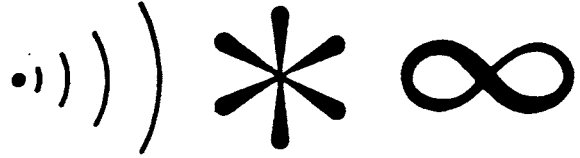


p·a·m

physics astronomy math



P-A-M Bulletin

Volume 17 No. 3

February 1990

MESSAGE FROM THE CHAIR

Bruce Pelz

Marlene Cummins and I attended the Winter Meeting in St. Louis on behalf of the Division in late January. The days were taken up with meetings of Program Planners for Pittsburgh/1990 (me) and San Antonio/1991 (Marlene), plus meetings of the Board of Directors and the Division, Chapter, and Joint Cabinets.

The St. Louis Chapter did an excellent job of setting up the conference and is to be warmly thanked for arranging the dessert reception at the St. Louis Public Library on Thursday evening.

There wasn't any earthshaking news to bring back. The money-conscious among us will be glad to hear there won't be a dues increase next year. The annual Directory (Who's Who in Special Libraries) will be able to include FAX numbers from now on -- and the SLA Staff has been asked to look into providing opportunity to include electronic mail addresses as well.

I was able to confirm that P-A-M has a Division Suite in the Vista Hotel (the closest hotel to the Convention Center). The exact location won't be available until the Conference itself, but this will make it easy to hold Executive Board meetings in the Suite on a reasonably tight schedule, and to make the Suite available for other P-A-M groups who may want to meet during the Conference. (If you come up with such a group -- even at the last minute during the Conference -- let me know. We might as well make full use of the Suite.)

We don't know yet where our meetings will be held -- for the most part the Conference Committee is trying to keep all the programs in the Convention Center, reserving the function space in the Vista for meal functions and the like. But I have suggested that several of our meetings -- which are relatively small -- might well fit into the Vista. This would keep the Back-and-forthing to a minimum for P-A-M attendees. We'll see what happens.

The idea of a Dinner Function for the 15th Anniversary seems to have met with resounding indifference. (My thanks to the two of you that did respond.) A wink is as good as a nod... so I will take care of the Anniversary Celebration in another way.

With regard to the P-A-M Workshops, the job of Coordinator for the Physics Workshop was vacated, and Julie Kreunen, who had wanted to do Physics in the first place, has moved over from the Astronomy Workshop (bringing with her Paula Garrett as co-Coordinator.) The Mathematics Workshop is in the capable hands of Nancy Anderson. I still have to fill the position of Coordinator for the Astronomy Workshop, so if you would like to volunteer, please write, phone, or e-mail to me at one of my various addresses. (I'll have to send out the Press Gang in April if I don't have a volunteer by then.)

My thanks to the Nominating Committee for its timely, efficient work. P-A-M, as the third-smallest Division of S.L.A., is very dependent on its cadre of conscientious

Message from the Chair (continued)

Actives to fill positions as elected officers and appointed committee heads year after year. (Subtle Hint. If you would like to join the Actives, or if you would be willing to continue in your current position, let Marlene Cummins know -- she'll need to fill all the appointed positions as soon after the Conference as possible. And there's room for several people on a couple of the committees.)

Bruce Pelz: 818-366-3827 (home)/213-206-1663 (work), ECZ5PEL@UCLAMVS.BITNET

The P-A-M Bulletin is published by the Physics-Astronomy-Mathematics Division of the Special Libraries Association. The Bulletin is issued four times each year: in August, November, February, and May. Subscriptions are free to P-A-M members and retired P-A-M members. Paid subscriptions are accepted: the cost is \$9.00 per year. Checks should be made payable to PAM-SLA.

Editor: Dorothy McGarry
(213) 825-3438
Physical Sciences and Technology
Libraries, UCLA
8251 Boelter Hall
405 Hilgard Ave.
Los Angeles, CA 90024-1598
Bitnet: ECZ5CTT@UCLAMVS

Special Libraries Association assumes no responsibility for the statements and opinions advanced by contributors to the Association's publications. Editorial views do not necessarily represent the position of Special Libraries Association. Acceptance of an advertisement does not imply endorsement of the product by Special Libraries Association.

Deadline for next issue: May 1, 1990

MATHEMATICS NEWS

Martha Murdoch

Note that Gordon and Breach has demanded a retraction of information regarding their serials which was published in the AMS journal survey in the NOTICES OF THE AMS, Nov. 1989. See article by Wm. Jaco in the Jan. 1990 NOTICES, p. 2, 18 and G & B's paid ad in that same issue.

The AMS Ad-Hoc Library Committee met in Louisville, January 17. Six of the eight members, including Nancy Anderson, Mary Ann Southern, and Dorothy McGarry attended the meeting. They and Professors James Rovnyak, Richard Askey, and Robert Doran discussed mathematics library issues with the mathematicians who came to the table in the exhibit area during the four hours allotted, and heard some very interesting comments. In addition, the members provided input on library-related questions in a CBMS survey that will be sent out to many mathematics departments early in 1990. The PAM Mathematics Workshop will provide an opportunity for reporting further after the comments have been coordinated, and for librarians to talk to the mathematicians who will attend our meeting in Pittsburgh.

Nancy Anderson, University of Illinois, is coordinator of this year's math workshop in Pittsburgh. She is planning to have some sort of panel discussion of the AMS Ad-Hoc Library Committee activities and progress.

While at the Louisville AMS-MAA meetings, Nancy was appointed to the Steering Committee for preparing a new Basic Library List. The last list was published in 1977. The new edition will be twice as big and is scheduled to be published in about 2 years. NSF and Exxon are underwriting the costs of production. Nancy will be contacting PAM members for additional input. Classic titles will be included even if out of print, and Nancy hopes this will prod publishers to reprint them.

Mathematics News (continued)

Randy Reichardt reports from Univ. of Alberta that they are facing yet another budget cut which means a 5%-25% cut in their serials budget.

Mary Kay from Columbia University reports that the RLG list of math serials is complete and in the process of a first update. The list will be sold in machine-readable format for IBM compatibles and Macintoshes soon--probably near the end of February according to Jim Coleman of RLG. Price is not yet set. The disk will contain two files--one in a formatted file to print off, and the other a delimited file to load into a spreadsheet or database management system. RLG members should be able to obtain free. To buy, contact: Christina Kasson, Publications Manager, Research Libraries Group, 1200 Villa St., Mountain View, CA 94041-1100, (415) 692-9951, BITNET: bl.cls@rlg.bitnet.

Carol Hutchins, University of Indiana, wants to alert researchers to an electronic preprints service. The Hoosier SCV Library serves to distribute preprints in electronic form to several complex variables researchers. Contact either: netlib@math.purdue.edu or netlib@math.purdue.edu@purccvm.bitnet. To get information about the Hoosier SCV Library, send the message: send info from scv. To get a listing of preprints, send the message: send catalog from scv. To get a preprint, send the message: send [filename] from scv. If you have problems, contact bedford@math.purdue.edu or bedford@iubacs.bitnet.

A final note, many of us are looking for some kind of automated circulation-security system that would insure that after hours users check their material out. If anyone knows of such a system, let us know.

Send items for inclusion in the next math column to: Martha Murdoch, Math Research Library, GN-50, Univ. of Washington, Seattle, WA 98195. (206)543-7296 BITNET: murdoch@uwacdc.acs.washington.edu.

A late note:

Duane Webster of the ARL has recently sent a memo concerning the survey on scientific, technical, and medical journal collections in libraries sponsored by the Foundation for International Scientific Cooperation. Webster says, "Postal authorities indicate the survey was mailed using a postage meter registered to Gordon & Breach. The P.O. Box for return of the survey is rented by an individual in a Washington law firm." Referring to the current G & B lawsuit against Dr. Barschall, AIP and APS, Webster says, "Legal counsel has suggested information provided by this survey could be used to assess damages for future litigation."

ASTRONOMY UPDATE

by Fran Waranius/LPI

Just a few news notes this quarter. I think we all took a rest during the holidays. Hope everyone had a happy time and took a deep breath to get ready for the '90's.

We are still having problems with Kluwer advertising techniques. Ellen Bouton reports that Kluwer's (New titles in science and technology 89/5 November-December 1989) includes a listing for "Solar and Stellar Flares, IAU Colloquium 104" but does not indicate that the volume is a reprint of "Solar Physics v.121, no. 1/2, 1989".

For those of you who order the Astronomical Society of the Pacific Conference Series, the volumes are no longer distributed by Brigham Young University Press. All orders, correspondence, etc. relating to the series should now be addressed to Astronomical Society of the Pacific, 390 Ashton Ave., San Francisco, CA 94112, tel: (415) 337-1100.

Brenda Corbin (USNO) has found a complete list of the European Southern Observatory Publications with prices in "ESO MESSENGER"

Astronomy Update (continued)

no. 58 December 1989. Since this information is often difficult to find, it is useful to have it all in one place. ESO Publications no. 1-33 are listed.

If you missed it, there is a very good article on the "Guide Star Catalog" developed at the Space Telescope Science Institute, in the December 1989 issue of "Sky & Telescope."

"Other Worlds from Earth: The future of Planetary Astronomy" is a report of the Planetary Astronomy Committee of NASA's Solar System Exploration Division. This Committee was formed in December 1985 to assess the status and health of NASA's planetary astronomy program and to make recommendations for future pursuits in this endeavor. Specific areas of consideration are the continued characterization and detailed study of the solar system using ground-based, airborne, and Earth-orbital capabilities, and the search for and characterization of other planetary systems. Planetary astronomy was found by the Committee to be a productive research discipline with significant potential for future progress; however, some problems were identified that must be solved to enhance future work in planetary astronomy. If the recommendations of the Planetary Astronomy Committee are implemented they will ensure a vital field of research through the turn of the century. The 100-page publication is GPO Stock Number 033-000-01052-4 \$7.00.

Membership Information

from Helen Knudsen

New Member:

Jackson B. Cohen, 240 West End Ave.,
Apartment 15C, New York, NY 10023
(718)520-7248

Edward H. Hosey, P.O. Box 4637, Berkeley,
CA 94704 (415)642-7604

Mark V. Scott, Massachusetts Institute of
Technology, Science/Engineering Library
#14S-134, Cambridge, MA 02139
(617)253-9321

Robert S. Seeds-III, Pennsylvania State
University, Mathematics Library, 109
McAllister Building, University Park, PA
16802 (814)865-3714

Paul M. Stieg, 800 N. Smith Rd., Apt. 23Z,
Bloomington IN 47408

Changes:

Jennalyn Chapman, 1202 W. Santo Domingo
Place, Tucson, Ariz. 85704
(602)621-2870

Marlene Cummins e-mail:

astlibr@vela.astro.utoronto.ca

Derek M. Kozikowski: change line after
Digital Equipment Corp. to: ZK01-1/F22

Julie Kreunen, SSC Laboratory Library, MS
2010, 2550 Beckleymeade Ave., Dallas, TX
75237 (214)708-6091, bitnet:

Kreunen@sscvox1

Edward Mays, 9908 Mesa Arriba NE,

Albuquerque, NM 87111 (505)846-1631

Catherine E. Pasterczyk: (505)845-8044

Randy Reichardt: (403)492-7911

John Wanserski: e-mail iacjjw@asuacad

Reinstate:

Diane J. Beck, 1500 Visalia Ave., Albany,
CA (415)642-43475

BUDGET SURVEY REMINDER

from David Stern

Please send a completed budget survey sheet (from the August 1989, Vol. 17 no. 1 issue) to David Stern, 204 Loomis Lab, 1110 W. Green St., Urbana, IL 61801 or BITNET: STERN@UIUCVMD or INTERNET: STERN@VMD.CSO.UIUC.EDU. This data has been requested by a number of members, and a true survey would be very useful. Minimum categories are: periodicals funds, contin funds, monograph funds (indicate if approval plan), other funds, online search costs/policies, student worker funds (not support staff). Please break these funds down to Physics, Math, and Astronomy categories if possible.

NOMINATIONS COMMITTEE REPORT

Mary Ann Southern, Chair

The slate of **candidates** for PAM offices is:

Chair-Elect: **Peggy Dominy**, University of Pennsylvania

Treasurer: **Sandra Moline**, University of Minnesota

Further nominations, accompanied by a written acceptance of the nominee, may be entered by a petition of at least 10 members, and filing it with the Nominating Committee at least 60 days prior to the annual business meeting.

LISA PROCEEDINGS

Brenda Corbin

Library and Information Services in Astronomy: Proceedings of the 110th Colloquium of the International Astronomical Union was sent to all participants in November 1989. Copies were also sent at the same time to all institutions who receive the Publications and Astronomical Papers of the U.S. Naval Observatory. If any PAM library did not receive a copy and would like one, please write to Brenda Corbin, U.S. Naval Observatory, Washington, D.C. 20392-5100. Telephone: (202) 653-1499 e-mail: lib@phobos.usno.navy.mil

Third Annual Marketing Swap & Shop

Sharon M. LaRosa (LMD Marketing Section Chair)

The Marketing **Swap & Shop** is an opportunity to share copies of your most successful marketing literature, and a chance to pick up new marketing ideas from other librarians. A number of concurrent Poster Sessions are featured. It is scheduled for Tuesday, June 12, 1990. If interested in participating, or for questions, call Sharon LaRosa at (617)871-6288.

PHYSICS WORKSHOP FOR PITTSBURGH

Julie Kreunen and Paula Garrett will be coordinating the Physics Workshop in Pittsburgh and are putting out a plea for people to send them topics to be included on the agenda. Please send ideas and topics to Julie Kreunen, Library, MS 2010, Superconducting Super Collider Laboratory, 2550 Beckleymeade Ave., Suite 125, Dallas, TX 75237 (214)708-6091, (214)708-6016(fax), SSCVXI::Kreunen (dechnet); Kreunen@sscvox1 (bitnet) or Paula Garrett, Fermilab Library, MS 109, P.O. Box 500, Batavia, IL 60510 (708)840-3401, fnal::pgarrett (dechnet)

AVAILABLE JOURNALS

Stephen M. Adler is seeking to donate some journals he has available:

Astrophysical journal, v. 125, 1957-v. 210, 1976 (missing v. 137, no. 2 (15 Feb. 1963), bound v. 125-136;

Bulletin of the AAS, v. 1, 1969-v. 9, 1977, v. 11, no. 2, 1979;

Sky and telescope, 1954-Apr. 1982 (probably missing issues (especially early years)

His requirements: the recipients would be expected to pay for shipping; he doesn't want to break up sets by distributing single issues; he would prefer donating the journals to a US-based, non-profit institution, but would consider requests from other organizations. Contact Mr. Adler at: 3 Sunny Knoll Terrace, Lexington, MA 02173 (617)861-9679.

"Palomar Observatory - European Southern Observatory Photographic Atlas of the Northern Sky"

Information sent by Helen Knudsen

The Cal Tech Palomar Observatory and the European Southern Observatory have provided information about the production of the atlas. It will be based on photographic plates obtained with the 48-inch Oschin Schmidt telescope at Palomar, with reproductions on film and on glass made at the ESO photographic laboratories. The

Atlas (continued)

Atlas consists of 894 fields, each in three colors (B,R,I). The price per Atlas is DM 60.000 on film and DM 460.000 on glass if prepaid. The expected production time is about 10 years, starting in 1990. Orders should be directed to the ESO Information Service, Karl-Schwarzschild-Str. 2, D-8046 Garching bei Munchen, FRG.

MISCELLANEOUS

The FK5 (Fifth Fundamental Catalog) is now available in printed version. It has appeared as Veroeffentlichung no. 32 of the Astronomisches Recheninstitut in Heidelberg (information provided by Anne Fishburn)

Further information on publication of the "Explanatory Supplement to the Astronomical Almanac": The date now given for publication is "sometime in 1990." This could be late 1990; many different people are writing chapters, going through several drafts, so it is taking longer than expected. It will probably be a purchased item rather than direct distribution (information provided by Brenda Corbin)

RUNNING YOUR LIBRARY LIKE A BUSINESS

SLA's Business and Finance Division and Florida Chapter will cosponsor a two-day seminar, "Running Your Library Like a Business," March 26-27, 1990, in Tampa, FL. For more information contact Barbara Stites (813)222-7115.

SLA CANDIDATES FOR 1990 ELECTION

Candidates for **President-Elect**: William H. Fisher, Division of Library and Information Science, San Jose State University and Guy L. St. Clair, OPL Resources Ltd., New York; **Chapter Cabinet Chair-Elect**: Donna W. Scheeder, Congressional Reference Division, Library of Congress and Marilyn Stark, Colorado School of Mines; **Division Cabinet Chair-Elect**: Marjorie M. K. Hlava, Access Innovations, Inc., Albuquerque and Barbara P. Semonche, Durham Herald-Sun Newspapers, Durham, NC; **Director**: Kaycee Hale, Fashion Institute of Design and Merchandising

Library, Los Angeles, Carolyn J. Hardnett, Baltimore Sun; Susan Hayes, Technical Information Center, Fort Lauderdale, and Susan M. Hill, National Association of Broadcasters Library, Washington, DC. Complete information on each candidate is published in the Winter 1990 Special Libraries. Answers to questions asked each candidate is to appear in the March 1990 issue of Specialist. Be sure to vote.

WRITING FOR SLA

If you have an idea for a book, are interested in compiling a bibliography, can suggest an author, or would like to referee manuscripts, contact: SLA's Publishing Services Section, Special Libraries Association, 1700 18th Street, NW, Washington, D.C. 20009 (202)234-4700.

CALL FOR NOMINATIONS

The Association's Nominating Committee is seeking candidates for nomination for SLA's Spring 1991 elections. All Association members are invited and encouraged to submit names and qualifications of individuals they would like to have considered for President-Elect, Treasurer, Chapter Cabinet Chair-Elect, Division Cabinet Chair-Elect and Directors to: Frank H. Spaulding, Chair, SLA 1991 Nominating Committee, 910 River Road, Piscataway, NJ 08854. Members of the 1991 Nominating Committee are: Frank H. Spaulding, Chair; Malcolm C. Hamilton, Paul M. Kleinfelter, Rue E. Olson and Susan J. Shepherd.

Names of recommended individuals must be submitted by May 1, 1990.

P-A-M Bulletin
v. 17, no. 3, February 1990
Table of Contents:

Message from the Chair--Bruce Pelz, p. 21
Mathematics News--Martha Murdoch, p. 22
Astronomy Update--Fran Waranius, p. 23
Membership Information--Helen Knudsen,
p. 24
Budget Survey Reminder--David Stern, p. 24
Nominations Committee Report--Mary Ann
Southern, p. 25
LISA Proceedings--Brenda Corbin, p. 25
Physics Workshop for Pittsburgh, p. 25
Miscellaneous and SLA news, p. 26

Triennial Becomes Biennial: SLA Salary Survey Schedule Changes

To provide comprehensive salary data on a more frequent basis, SLA's triennial salary survey will become the biennial salary survey beginning in 1990. The full survey will be conducted every two, as opposed to every three, years. The salary survey updates, a random sampling of 25% of the membership with an abbreviated questionnaire, will be continued in the interim years.

In addition to the changed frequency, the salary survey instrument has undergone a few revisions to reflect the evolution of the field. Besides revisions to existing questions, a new section has also been added which deals with employee benefits. Your participation in the salary survey is vital, and your response will help to ensure meaningful results.

Questionnaires for the 1990 survey will be in the mail the first week in April. Please watch for your survey form and return it by the May 18, 1990 deadline. Thank you in advance for your support of and your participation in SLA's new biennial salary survey!

P-A-M Officers 1989/90

Chair:

Bruce Pelz
19531 Kalisher St.
Granada Hills, CA 91344
(213)825-4035

Chair-Elect:

Marlene Cummins
University of Toronto
Astronomy Library
60 St. George St.
Room 1306
Toronto, Ontario, Canada
M5S 1A8
(416)978-4268

Secretary

Ellen Bouton
National Radio Astronomy
Observatory Library
Edgemont Road
Charlottesville, VA 22901
(804)296-0254

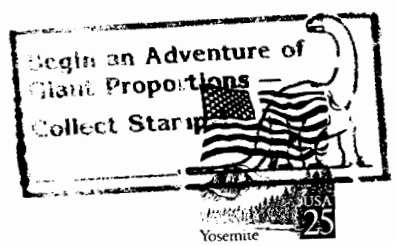
Treasurer

Cathaleen Van Atta
Kitt Peak National Observatory
P.O. Box 26732
Tucson, AZ 85726
(602)325-9295

Archives

John W. Weigel II
Physics-Astronomy Library
University of Michigan
Ann Arbor, MI 48109
(313)764-7207

Dorothy McGarry
Physical Sciences and Technology Libraries
6251 Tealter Hall
University of California, Los Angeles
Los Angeles, California 90024



ARCHIVES
Jack Weigel
Physics-Astronomy Library
290 Physics-Astronomy Building
Ann Arbor, MI 48109

