

# The Confluence

Newsletter of the Special Libraries Association - Pittsburgh Chapter

Volume 76, Issue 1

April 2011

## Not Your Mother's Value Proposition:

### President's Message - Haley Hodum

Where *has* the first quarter gone? It seems like only yesterday I was packing my bags for the SLA Leadership Summit in Washington, DC and driving in the snow. Well, half of that sentence is still true in early April!

So what have we been doing so far, you ask? Fair question.

Following Leadership Summit, I spent some time reflecting on who our membership is and what value we provide them. The Summit had touched a number of times on the idea of not only providing value to your membership but also clearly communicating what that value is. Through discussions with my executive board, as well as my amazing committee members, I was able to formulate some key value concepts provided by our chapter. However, value is only as good as its perception and its sustainability, and I believe that each member must take ownership of its delivery.

At the risk of demonstrating my obsessive compulsive affinity for lists and plans (really anything that makes me feel like I have my life together), I want to share in list form some great things that have happened or are happening in our chapter that to me reflect the value of our chapter, as well as how you as a member can help develop and sustain this value!

#### Student Engagement

We are lucky to have two MLS programs so close to our chapter—University of Pittsburgh and Clarion University of Pennsylvania! They provide us with an additional value channel and a great opportunity to interact with soon-to-be new professionals. We currently strive to provide value through mentoring opportunities, student panels, interview prep, and resume workshops. At our recent student panel at Pitt, one student provided feedback that “it was the best meeting I have attended as a student here.”

Your charge: At the next meeting you attend, please introduce yourselves to any students and provide them with a business card if you are able. It's great for them to walk away with professional and local contacts!

#### Networking

Not only do we have an involved and passionate chapter, but we actually like each other! This makes networking that much easier. Networking with fellow professionals is a proven way to expand your professional opportunities, understanding, and expert network for future troubleshooting (we all need a little help sometimes!). The opportunity to network doesn't just stop at meetings, though. Outside of our monthly

meetings, there is a need for networking and closely related mentoring.

Your charge: While we tend to know many of the 'regulars' at meetings, it is always exciting to see faces we haven't seen in a while or new faces! So please challenge yourself to sit next to someone you don't know at the next meeting or to introduce yourself to someone new during the networking time in the beginning. Additionally, if you are interested in becoming part of the fledgling mentoring project, please contact Lynn Berard or Haley Hodum.

#### Committees

Our chapter is unique in that our committees plan and execute the majority of our meetings throughout the year. The value this brings to our members is variety and fresh meeting ideas. In terms of development, event planning and serving on a committee also provides a valuable opportunity to develop skills like public speaking, presentation, communications, and marketing—skills that you can transfer into your current roles!

Your charge: As part of our Engagement Survey Strategic Plan, we challenged ourselves to increase committee membership to a minimum of

**Continued on Page 2**

#### Inside this issue:

Promising Professional Award Granted	2
Volunteers Needed	2
New Chapter Members	2
Library Profile	3
SLAPSG Collects Medical Literature	4
Membership Memories	5
February Event Recap	7
The Value of My Membership	7
March Event Recap	8
Chapter Member News	9

## Promising Professional Award Granted ~ Marge Rhodes

Congratulations to Deb Martin, the recipient of the Pittsburgh Chapter's 2011 Promising Professional Award (PPA)! Deb received her MLIS degree from the University of Pittsburgh in 2009. Currently, she is the Library Assistant at Pine-Richland School District and the volunteer Librarian at St. Richard Church, both in Gibsonia, PA. Deb joined SLA in 2008 and now serves as Secretary on the Chapter executive board. The Pittsburgh Chapter's PPA is intended to encourage new information

professionals to participate more fully in SLA and Chapter activities by awarding grants that can be used to defray costs associated with attending conferences of the Special Libraries Association (either the Annual Conference or the Leadership Summit). Deb will attend the Annual Conference in Philadelphia this June. We look forward to hearing about her Conference experiences and networking in the next issue of *The Confluence*. Congratulations Deb and have a great conference!

## Volunteers Needed!

The **Awards Committee** is looking for another team member. This committee is responsible for soliciting nominations for Chapter and Association awards and for disseminating information regarding the same to the Chapter membership. Team member responsibilities are to assist in evaluating and recommending all nominees for Chapter awards, and in planning and participating in the annual Holiday & Awards Party and Annual Business Meeting in December. The majority of the work is done through email. Time commitment is minimal. This rewarding volunteer opportunity is a

vehicle to get to know fellow Chapter members better and to celebrate their accomplishments. Please consider volunteering. Contact chair [Marge Rhodes](#) if interested.

This year will be Amy Watson's last as **Editor of The Confluence**. If you are interested in taking on an incredibly rewarding role, starting in 2012, please [contact her](#) for more information. Ideally, the remaining two issues this year could be a collaborative effort. The editor is responsible for publishing three issues of the chapter newsletter a year. Help keep your fellow chapter members informed and consider volunteering!

## President's Message Continued ~ Haley Hodum

### Continued from Page 1

three members serving on each committee by the end of the year. Help our chapter reach this goal and become involved! Contact Haley Hodum or a committee chair if you have questions. Chairs are posted on the chapter website.

### Confluence

Our newsletter is a strong communication value channel for our chapter. It is frequently recognized by other chapters and headquarters for its content, and I believe that it is a

consistent way of reaching our membership and staying connected. In addition to the communication value it provides, it also provides contributors an opportunity to test the waters of writing and being published.

Your charge: I challenge each of you to contribute to the *Confluence* this year. It can be a special thanks you'd like to see added, an event recap for a meeting you attended, or a summary of a major project you've accomplished or challenge you're facing in your job. Whatever the content, contributing and sharing in our newsletter furthers

## Welcome New Chapter Members!

December 2010

Bernard Borum  
Mark Vrabel

January 2011

Debra Cashion

February 2011

Michael Daniels  
Sean Henry  
Alexis Smith Macklin

March 2011

John Clark  
Alyson Pope  
Amy Yonick

## Special Thanks...

To the panelists at the recent Pitt and Clarion student events: Lynn Berard, Denise Callihan, Rachel Callison, Haley Hodum, Sharon Palchak, Brian Steinmetz, & Royce Werner.

your investment in the chapter and in your professional development! Contact Amy Watson for ideas or questions regarding submissions.

I hope that you each see value in your membership and our chapter. I also hope that you will each reflect on the opportunities within the chapter and challenge yourself to accept one of these charges! By doing this, you will not only receive more value from your membership, but you will also contribute to the value received by other members.

# LIBRARY PROFILE

## Children's Hospital of Pittsburgh of UPMC Family Resource Center & Library Services ~ Carolyn Biglow

Children's Hospital of Pittsburgh of UPMC transforms the lives of infants, children, and adolescents by combining the science of medicine with compassion for our patients and families. The hospital is consistently at the forefront of advanced patient care, biomedical research and medical education. The hospital's international reputation for high-quality clinical services is complemented by its commitment to the practice of patient and family-centered care. Along with factors that range from outstanding nursing care and some of the most advanced technology contribute to Children's consistent designation as one of the best pediatric hospitals in the United States by *U.S. News & World Report*.

The Children's Hospital Library is located within the Elsa M. and Alma E. Mueller Family Resource Center. The 20,000 square-foot Mueller Family Resource Center located on the 6<sup>th</sup> floor of the main hospital was designed to provide a supportive and educational environment for Children's Hospital's patients and their families. Children's commitment to patient and family-centered care means that we recognize families as full partners in the care of their children; that we empower them with the tools and knowledge to successfully navigate the complexities of the medical system and that we support them through the challenges and stress of their loved one's hospital stay.

Children's Hospital's Library, like other academic medical libraries, supports the research needs of its clinical staff and researchers as well. Our medical librarian provides instruction on medical database searching, and performs comprehensive literature searches for all clinical and research staff and departments. Uniquely, our medical Librarian also serves as our consumer health librarian, providing guidance and support to meet the

informational needs of families, who are often struggling to understand their child's diagnosis. Family members can request customized information packets that contain reliable, up to date information from the library's consumer health collection – including print and electronic resources on an illness or condition, a menu of support services available to them, and guidelines on caring for their child. Education and information sharing is an essential feature of support to families who are valued, active partners in their child's care.

Within the Library, Children's maintains four circulating collections: Blaxter Medical Library, Consumer Health, Young Adult, and the Moulis Children's Library. The Blaxter medical collection contains print medical textbooks, reference materials and journals that support patient care provided by clinicians in every area of Children's Hospital. There are also CME and certification materials for nurses and other clinicians. In addition, electronic access to resources is provided through the Health Sciences Library System of the University of Pittsburgh, a portal for access to online electronic resources for any Children's employee. These resources include full-text access to medical journals, ebooks and databases including UpToDate, CINAHL, PubMed and Ovid Medline, MICROMEDEX, Web of Science, Embase and Scopus.

The Consumer Health, Young Adult, and Moulis collections have educational



Photo Credit: EFB Photography

materials and recreational books, DVDs and journals that are available for both in- and out-patients to check out from the library. Serving patients and families from across the globe, Children's recently added a small (but growing) foreign languages recreational reading section, as we believe that one of the biggest comforts that we can offer is a favorite book to a patient in his or her native language. Children's also maintains an active Adopt-a-Book section, comprised entirely of donated books and magazines ranging from young child to adult. Patients and families are invited to take these materials to keep and share, promoting both literacy and a sense of community.

Children's Hospital's Library is home to the Family Business Center, offering computer, internet, copy and fax access so families can take care of the business of their lives from the hospital. Desktop computers, a telephone and a multi-function copier/scanner/fax are available for families to use. The newest addition to the Library at Children's is the Kohl's Safety Center. This center and its specially trained staff provide home safety assessments, parent and family training and complimentary items to keep children safe at home, on their bikes

**Continued on Page 4**

## SLA Pittsburgh Student Group Collects Medical Literature for US Troops - Amy Yonick

Members of SLAPSG (Special Libraries Association Pittsburgh Student Group) have been hard at work this semester collecting medical textbooks to send to U.S. troops in Afghanistan. The outreach project, called OML @ Pitt, is part of Operation Medical Libraries (<http://opmedlibs.medalumni.ucla.edu/>). The library and information science students will send the books to a designated contact in the military who will then disperse the much needed medical literature to hospitals and other health centers in Afghanistan. The medical literature in the country is currently lacking due to previous regimes like the Taliban who banned any images of the human body, even in medical schools.

The LIS students were first made aware of the efforts when they read an article (<http://www.nytimes.com/2010/08/31/health/31library.html>) in Ellen Detlefsen's Health Sciences Resources and Services class during the fall semester. Surprised to see that the University of Pittsburgh was not a participating institution, SLAPSG president and Pittsburgh chapter member Amy Yonick decided to start OML @ Pitt after positive feedback from other student members. The outreach project has also generated a couple of new members for SLAPSG.

So far the LIS students have collected over 70 textbooks. They have reached out to various schools at the University of Pittsburgh, including the School of Medicine and the School of Nursing. Some SLAPSG members handed out flyers at a PalPITTations concert, an a cappella group at the university consisting of medical students.

The LIS students are currently in the process of raising funds to ship the books via the Military APO system. Yonick developed a strategic marketing plan for OML @ Pitt for Sue Almans's Marketing and Public Relations for Libraries class. She hopes to have all the books shipped by the end of the semester (April 30). Another goal of OML @ Pitt is to become an official participating institution for Operation Medical Libraries. Yonick, who will be graduating from Pitt with an MLIS in the fall, hopes that incoming LIS students and SLAPSG members will



OML founder Amy Yonick sorting through medical textbooks that will eventually be dispersed by U.S. troops in Afghanistan to improve the country's health care system.

continue to work on the project after she graduates this summer. The faculty advisor for OML @ Pitt is Ellen Detlefsen.

If you would like to donate books or make a monetary donation to the project, contact [amy36@pitt.edu](mailto:amy36@pitt.edu). Any books related to health sciences that have a copyright date of at least the year 2000 are being accepted. Paper journals and board exam reviews are not being accepted at this time.

More information about OML @ Pitt can be found at <http://sla-divisions.typepad.com/slaps/oml-pitt.html>.

## Library Profile Continued - Carolyn Biglow

### Continued from Page 3

and in cars. Families referred to the center are able to obtain bike helmets and child-proofing gear to protect young children from burns, shocks, and falls in the home.

The library serves as a center for family education, offering regularly scheduled infant and child CPR classes, parent education and support groups, and our summer reading program. As part of the Family Resource Center, we also

maintain a growing number of informational brochures and resource material for families from community organizations. Our dedicated staff serve as consultants for patients and families for library materials, hospital information, and community resources.

The library is open seven days a week from 8:30 a.m. to 10 p.m., offering access to the Family Business Center and the Adopt-a-Book area. Staff is available on Mondays from 8:30 a.m. to 5 p.m.; Tuesdays through Fridays from

8:30 a.m. to 8 p.m.; and Saturdays from noon to 8 p.m. Staff members are Carolyn Biglow (Medical & Consumer Health Librarian); Matt Hartung and Lisa Christopher (Library Assistants), a masters-level intern from the University of Pittsburgh, and two work-study students. We invite you to explore the special recourses available in the Library on the 6<sup>th</sup> floor of the Main Hospital at One Children's Hospital Drive; 4401 Penn Avenue. Our staff can be reached at 412-692-5288 or [carolyn.biglow@chp.edu](mailto:carolyn.biglow@chp.edu).

**Editor's Note:** Members of the chapter board were asked to submit either an example of why they find their SLA membership valuable, or a favorite memory of their involvement in SLA. I hope to carry this column across all three issues this year, as my last year as editor. Beware as the next two issues approach - I might be nagging you next! - Amy

---

*"How many librarians does it take..."*

My favorite SLA memory is driving to Annual Conference 2009 in Washington, DC with Denise Callihan and Nancy Carlson. I could not have expected to enjoy as much as I did that brief moment of panic that led to us pulling over on a major highway and smelling our engine.

- Haley Hodum

---

I have so many favorites...it's so hard to choose. I think our annual conferences are always a great time to interact with our chapter members a bit more than a monthly dinner meeting may allow. Hanging out with fellow chapter members at these conferences are really my best experiences: From Brian Steinmetz ordering "flaming cheese" for dinner in San Antonio or me eating the best pasta dinner at Zucca in Los Angeles with Ange Pollis and Bob Sullivan, to Kim Gregory and Lynn Berard crashing my carefully planned chemistry division Open House celebration in Baltimore, to a number of us hitting little Italy in New York (thankfully Amy Watson knew which subways to take for all of that trip!).

All of my collective experiences speak to the strength of community and fellowship that we share. For me, these "memorable fun moments" highlight the true VALUE of my membership in SLA. I can't imagine my career without it: it allows me to have fun, share experiences and still learn continuously within a community of life long colleagues. There's never any pressure, and our members always share their knowledge and best practices without hesitation.

- Denise Callihan

One of my favorite SLA memories involves attending the 2007 Leadership Conference. I'd attended SLA Annals before, but had never been to this smaller, more focused meeting. The main thrust of this meeting was the future direction of the organization – including the kick off of the alignment project, etc. We had a great speaker, Chip Heath - author of *'Made to Stick'*, a pre-pub copy of which we all received & is currently sitting on the shelf next to my desk even as I type this. However, the real reason I'll always remember this meeting was because it epitomized the CPIT traditions of a) mixing business with (ample amounts of) pleasure and b) enjoying ourselves in ALL situations. Chapter members Amy Watson & Bob Sullivan were also in attendance at this meeting and can attest to the somewhat... 'unique' atmosphere in which we found ourselves. First, we thought we would be in Reno, NV. But we were actually at a casino complex in Sparks, NV – about 15 miles outside of Reno. I'd never been to Sparks before, and I can most definitely say that I'll never visit it again... at least not of my own volition. I happened to arrive before Amy & Bob, so I decided to take a walk outside of this casino/hotel complex. I quickly surmised that there was basically nothing else around EXCEPT the casino complex...unless you count a closed pawn shop. We found out later - from a taxi driver - that it was a good thing I wasn't too determined to find something else. Apparently the direction I'd been walking toward eventually became an area that he found so scary, he said he would never stop and pick up a fare there. We had to walk through a haze of flashing and ringing one armed bandits every time we wanted to go eat...remember - because of the findings of my earlier, failed excursion - we could only do so within the complex (outside = nada). And to top it all off...we were not the only group in 'town' for a meeting. Safari Club International (*FIRST for Hunters!*) was also sharing the weekend with us. So, in addition to 24/7 slot machines, we were treated to a DVD loop of a man stalking, shooting and gutting some poor, large-horned ram

every time we crossed the lobby. Did I mention the solid gold rooster rotating (as if on a spit) in the lobby? Or that none of us gamble? That all said...here it is four years later, and we STILL talk about that meeting. Although it was a truly odd...dare I say, cheesy...location; the (always fun) people in our chapter - and the new SLA members we met - are what made it a wonderful & memorable time.

- Rachel Callison

---

Let's see....which memory to focus on?...there was my very first conference as a student, having arrived in Manitoba during a dust storm?...or the tornado in Denver? ... Hummm, perhaps the hail storm in Minnesota? Weather in June can be tricky and with my luck in attending the annual conference during "weather events," I began to suspect that I was a weather beacon. Then again it could be the after conference trip to Yosemite, the glider lessons in Phoenix, or the 10 day wilderness canoeing trip to the Boundary Waters? Choosing one favorite memory is very hard for me as I have been very lucky in my career to have so many great memories of my time at SLA events making life-long friends while doing what I love (and having fun doing it). In my soul I realize that the one memory that means the most to me and that I am most fond of was the Night of the Pittsburgh Hat Trick! In June of 1999 in Minneapolis, Minnesota three Pittsburgh Chapter members were honored with awards: Ange Pollis was inducted into the Hall of Fame, Barb Spiegelman became a Fellow, and I was awarded the Rose Vormelker Award for mentoring. The Chapter made a huge showing at the awards banquet, commanding a large table decorated in Steelers colors, waving their terrible towels, and dancing to the requested song "We Are Family". To be a part of that trifecta was a great honor indeed and I have the Chapter to thank for many, many years of support. I love you guys.

- Lynn Berard

**Continued on Page 6**

**Continued from Page 5**

Regardless of the industry in which you work, professional affiliations are invaluable with regards to exposure to local and national current events, introductions to new concepts and trends, and, most importantly, building relationships. In my previous career, every relationship initiated and furthered within the realm of a professional gathering was eventually relied upon when mutual client negotiations were on the table. It is not easy moving away from all contacts and reputation and starting this process over again in a new industry. On so many levels, our SLA chapter has been an invaluable friend with starting anew in Pittsburgh. Continued exposure to local nuances, professional development, current events, and the many facets of corporate librarianship, are just a few of the benefits of our SLA membership. Far surpassing all of these benefits, however, is the warm and welcoming nature of the members of Pittsburgh chapter. This atmosphere fosters the development of new relationships and promotes involvement. What a treasure!

- Deb Martin

The photo below is one of my favorite SLA moments -- Hanging out with Amy Watson and Rachel Callison on top of the Space Needle in Seattle -- we attended a recognition reception while at the annual conference that had a special emphasis on the international aspect of SLA.

- Eve Wider



SLA member. I can honestly say I wouldn't be where I am today if not for my membership in SLA and networking with other members.

- Brian Steinmetz

I find my SLA membership to be valuable because I benefit from interaction with my fellow librarians. This is important because the Pittsburgh chapter of MLA no longer exists. Networking with SLA members helps me to fill the gap left from losing MLA in Pittsburgh. Although I joined MAC/MLA, all interactions are done online, and there are no local events.

My two favorite memories are of the Reverse Mentoring/Social Networking event, and when we visited the Iron Mountain storage facility. I really enjoyed finding out about Facebook, Wikis, Twitter and other programs, from the students who helped us. It was a very clever and informative session, and I hope we can do something like it again. At Iron Mountain, I was able to find out about the storage of UPMC biology slides, and I was delighted to tour the film storage areas for several Hollywood studios. Iron Mountain is a very fascinating place!

- Carolyn Biglow

One of the most valuable benefits of my SLA membership would be its role in helping me find employment. Every job I've had out of graduate school I've indirectly obtained through SLA. I found the job ad for my first library job on a SLA job board. I found my next job after talking to a Pittsburgh SLA member at the SLA conference in San Antonio. She told me about an open position and encouraged me to apply for it. My current job was also brought to my attention by another Pittsburgh

My favorite SLA memory occurred during the 2008 event- "A Night at the Symphony." During the tour, I remember looking at the attendees- an amazing, diverse group of librarians, SLA members and friends and thought to myself... "Wow, I'm actually one of them." It was pretty awesome... after 10+ years in corporate America, 2 years of part-time library work and a year of library school, it finally felt real. I was part of a pretty cool "in-crowd."

- Karen Liljequist

Two of my most impactful SLA memories involve the Denver Airport. First, en route to the Leadership Summit (that Rachel mentioned earlier) in Reno, as I boarded my connecting flight the flight attendant asked me "are you here for the conference?" I was a little put off thinking in my head "is it THAT obvious that I'm a librarian?" but what I learned very quickly is that I was a minority attending a library conference amid an entire plane of big game hunters. I don't know which bothers me more, that I was mistaken for one of the hunters instead of a librarian, or that my thought that the "world revolves around libraries" was shattered.

Several years later, on my way to Annual in Seattle, I had another layover in Denver. Those of you who have had the misfortune of travelling with me know that bad luck follows me through airports. That particular trip involved delayed flights, missed connections, lost luggage and me shouting the phrase "So I can't fly without my luggage but my luggage can fly without me!!!" at a poor airline employee. Witnessing my breakdown, a fellow SLA member came up to me, mentioned that he recognized me from a previous conference, and calmed me down. That anonymous member of the NY Chapter helped me regain my composure, shared a cab with me into Seattle, and made sure that I arrived safely at my hotel (my luggage arrived the next day, at 2 a.m.). It drove home the idea that we as a profession are one enormous network, and while we are normally caregivers of information, we are also caregivers for each other. PS - Don't fly through Denver with me.

- Amy Watson

## February Event Recap: Student Networking Panel - Brian Steinmetz

The SLA Pittsburgh Chapter Student Event was held on Thursday, February 17th in the SIS Library at Pitt. We had nearly three dozen attendees! The event's format was a panel discussion on competitive intelligence, project management, and business analysis. Panel members included Denise Callihan, Rachel Callison, Haley Hodum, Brian Steinmetz, and Roye Werner. The panel discussed such things as how they got into their respective positions, their favorite library resources, and the importance of career planning. The student group appreciated the chance to interact with current library professionals and the information provided by the panel gave students insights not yet covered in their coursework.



(L-R) Haley Hodum and Denise Callihan pose for the camera (Carolyn Biglow innocently standing by in the background), while Brian Steinmetz and Roye Werner discuss the evening's panel.

## The Value of My SLA Membership - Mary Strife

I have been a member of SLA since 1986 because my first mentor said this would be a perfect place for me because of my sciences/engineering background. He was killed in a motor vehicle accident in 1988 so SLA ends up reminding me of him all the time. In the Upstate NY chapter, the person who sets up meetings was separate from the chair-elect. I had planned a meeting with Donald King in the Albany area and my mentor could not attend because he had a commitment with his bagpipe group in Western NY. It was something he loved. This was the weekend he was in the accident. But he made sure I was well on my way as a special librarian. The other memorable pieces of my Upstate NY Chapter events was that Herb White was our keynote speaker for the 25<sup>th</sup> anniversary—fairly soon after Indiana had beat Syracuse in the Big Dance. And I was on chapter council with Stephen Abrams when he was an officer in the Toronto chapter, Rebecca Vargha from NC, and Doris Helfer from CA.

I have been a member of the Pittsburgh chapter since 1996. However, I was aware of this chapter before I got here.

My first conference was in Pittsburgh in 1990, before the new airport was in use. I flew in from Syracuse on Saturday and stayed near the airport till my two roomies arrived on Sunday. We stayed in the William Penn and had a great time ---except for the absence of dining options on Sunday. But it was a great first conference overall.

The other reason I was aware of the chapter is because of the Great Lakes Regional Conferences. I was on a committee with Earl Mounts since I was either chair-elect and chair in the Upstate NY Chapter. I might have seen Earl two years in a row. What a perfect person to meet as the chapter rep! The chapter has such a stellar group of current and former members--rather a daunting group but oh, so welcoming!

I chose to take my time to get involved in the Pittsburgh Chapter, serving as Membership Chair around 2000/01. I come to as many meetings as I can, taking into consideration the location and weather. I came to one or two meetings a year in 2007-2009. But I have made efforts to come to more meetings in the last year or so. As to

why I chose to run for a board position this time---it seemed like the right time. The planning of and actual completion of our renovation has happened. I know from personal experience that I am happiest and get the most out of an organization if I step up and get involved. The Director position is the perfect fit at this time. Plus what a super group of people to work with.

### Feedback Requested

Information Outlook, SLA's magazine, is published in two formats: a printed version and an online, HTML-based version. The Information Outlook Advisory Council (IOAC) is exploring whether to cease publication of the printed version and upgrade the online version so it better serves the educational and research needs of SLA members.

Please take a 10-question survey at <http://www.surveymonkey.com/s/ZCJ8FQP>. The survey results will be used by the IOAC in determining how best to proceed in this matter.

## March Event Recap: Copyright Basics ~ An AMAZING Professional Development Event- Denise Callihan

Our first Professional Development Event of the year was held on March 16 at the Children's Institute in Squirrel Hill ([www.amazingkids.org](http://www.amazingkids.org)). 34 of our fellow chapter members, students and guests joined us to take in 2 library tours and hear from the experts from the Copyright Clearance Center.

Tricia Kelley, Day School Librarian at the Children's Institute, started the evening off by providing a tour of her library. The Day School serves approximately 200 students from Allegheny and surrounding counties. Most of us were surprised by the large numbers of students served by the Institute. Tricia explained how the library fits into the curriculum, and the adaptations she needed to make to allow all students to use the library. She demonstrated a system she devised for a non-verbal student to request items using pictures. Learn more about the Day School at: <http://www.amazingkids.org/content.aspx?sectionid=2>

Karen Liljequist, host of the event, provided a tour of her medical library. "Providing authoritative and current quality healthcare information to physicians, staff, families and the community, the library is just one of the amazing places that people can come to get what they need at The Children's Institute." See more about this library at: <http://www.amazingkids.org/content.aspx?SectionId=1&SubSectionID=14&pageid=20>

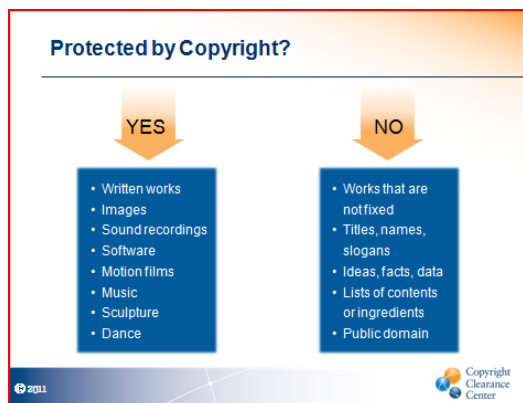
While these two libraries are housed in one facility and have such different user populations, the needs of their patrons are well addressed. I enjoy tours of special libraries because each library demonstrates different perspectives and offer good reminders for us. In this case, user/patron needs were highlighted dramatically, demonstrating how library design and setup has to appeal to our patrons, but also allow them to interact in our spaces.

(Is there a library you'd like to visit or learn more about? Please let me know!)

Aside from the library tours, the main event was focused on the review of copyright basics, always a useful topic for libraries! Michele Ayers, Manager, Educational Services at the Copyright Clearance Center, along with Stephanie Holden, Account Manager, Corporate Renewals provided a good overview of copyright, including fair use, infringement and licensing options. (If you are interested in reviewing the presentation, please contact me for a copy).

All of CCC's educational resources can be found online at [www.copyright.com/education](http://www.copyright.com/education), including guidelines for creating your own copyright compliance policy. All of their material may be freely shared among your colleagues. CCC also has a few great videos that provide a synopsis of some of the important concepts covered in the presentation. Some recommended items:

\* *Copyright Basics* featuring Jim the Librarian is a great way to learn about copyright law basics without taking up too much valuable time. In fact, the



video is all of 6 1/2 minutes.

\* *Copyright at Work* focuses on copyright compliance challenges in the workplace and is a nice summary of what was covered in the presentation.

Michelle reminded us also that she is teaching a ClickU sponsored Continuing Education class at the SLA annual conference on Sunday June 12 from 1:00-5:00 called *Copyright in Today's Digital World*. If you're interested, please register. Thanks so much to Karen for hosting this event and to the CCC for supporting our chapter with a very informative and interesting presentation!

I'm always looking for topics that appeal to our professional development needs. If you have one you'd like me to explore, please contact me.

### Upcoming Programs at the Downtown & Business Branch of the Carnegie Library of Pittsburgh

#### Thursday Noontime Business Program Series

12:15 - 1:00 PM

- \* Insider Secrets of Real Estate and Mortgage Professionals - April 21
- \* The Panic is On: The Great American Depression as Seen By the Common Man - April 28
- \* Using Social Media to Grow Your Business - May 5
  - \* "The Eldercare Journey" - May 12
- \* The Road to Credit Recovery - May 19
  - \* Freakonomics: The Movie - May 26

## Chapter Member News

SLA President-Elect Cindy Romaine has appointed **Mary Strife**, Director of the Evansdale Library at West Virginia University to the Emergency Preparedness & Recovery Advisory Council (<http://www.sla.org/content/community/committe/emerprep.cfm>). Mary has also posted to the Future Ready 365 Blog. Her message about student input to do their library renovation was posted on February 11, 2011. Way to go Mary!

Two Pittsburgh Chapter members were recently inducted into Beta Phi Mu, the International Library & Information Studies Honor Society. **Debra Ann Martin** and **Casey Brady Sirochman** were two of six inductees to the Pi Chapter on April 1, 2011. The induction ceremony took place at the Pittsburgh Athletic Association. Beta Phi Mu's motto, *Aliis Inserviendo consumor*, meaning "consumed in the service of others" was selected by the founders based on the concept of dedication of librarians and other information professionals to the service of others. Congratulations Deb and Casey!

SLA-CPIT  
Special Libraries  
Association-  
Pittsburgh Chapter

[http://www.sla.org/  
chapter/cpit/  
index.html](http://www.sla.org/chapter/cpit/index.html)

**The Confluence** is the newsletter of the *Special Libraries Association - Pittsburgh Chapter*. The next issue will be published in **August 2011**. Article submission deadline is **July 25, 2011**. Please contact Amy Watson at with any submissions, or issues or concerns relating to the newsletter.



**SLA Announces  
Candidates for 2012  
Board of Directors:**  
[http://www.sla.org/content/  
SLA/governance/  
bodsection/index.cfm](http://www.sla.org/content/SLA/governance/bodsection/index.cfm)

**SLA 2011**  
Annual Conference & INFO-EXPO  
12 - 15 June • Philadelphia, Pennsylvania USA

**Are You  
FUTURE READY?**

**SLA 2011 Annual Conference & INFO-EXPO**  
12 - 15 June 2011  
Pennsylvania Convention Center • Philadelphia, Pennsylvania USA

**Featuring Keynote Speakers:**

	<b>Thomas Friedman</b> Three-time Pulitzer Prize winner and author of <i>Hot, Flat and Crowded</i> .	
	<b>James Kane</b> Researcher and consultant on building loyalty and connections.	

[www.sla.org/Philly2011](http://www.sla.org/Philly2011)

Special Libraries Association - Pittsburgh Chapter assumes no responsibility for the statements and opinions advanced by contributors to the Association's publications. Editorial views do not necessarily represent the official position of Special Libraries Association - Pittsburgh Chapter.

© 2011 by Special Libraries Association - Pittsburgh Chapter. Material protected by this copyright may be photocopied for the non-commercial purpose of scholarship or research.