

DRAFT Minutes for Kentucky Chapter of Special Libraries Association Business Meeting—Friday, November 10, 2006

Attending

Constance Ard, Jan Berry, Susan Brown, Jan Carver, Leoma Dunn, Wenda Fischer, Alex Grigg, Eeva Hoch, Shawn Livingston, James Manasco, Linda Minch, Mark Paul, Katy Roe, Michele Ruth, Liz Smith, Jo Staggs-Neel

1. Call to Order

President Mary Vass called the meeting to order at 3:30 p.m.

2. Volunteer for Minutes

Jan Berry volunteered to take minutes.

3. Reading of minutes of the August Meeting

As there were no corrections to the previous minutes, Jo Staggs-Neel moved to approve, and Glenda Neely seconded. All were in favor.

4. Brief reports/Action items

A. President

No report.

B. President-Elect

Susan Brown spoke briefly about attendance at national. She has received a couple of suggestions for the new name of the Spring Joint Conference. She thanked Constance Ard for the “Collaborate & Innovate!” conference, and reminded everyone about the next meeting in mid-February.

C. Past-President

Constance Ard noted that Patrick Davidson was making a formal proposal for KY-SLA to be represented on the KLA board. He has written a list of benefits, and believes it would be a “Fair/Fair” situation. The KLA board, however, needs to approve this. Susan Brown said that we need to have an official request from KLA before following up on this. Constance thanked everyone for a successful “Collaborate & Innovate!” conference.

D. Secretary

Not in attendance—No report.

E. Treasurer

Before Leoma Dunn presented her report, Mary Vass thanked her for pursuing equity for reimbursements for the Spring Conference. They have agreed to send \$169.37 to us and the Special Section. Leoma reported that she sent Mary Margaret a follow-up note, but has not received our money yet. She will call her on Monday. She said it sets a good precedent. Patrick has asked Constance and Leoma to work with the 2008 committee.

Leoma handed out the Treasurer’s report (attached). She gave rough estimates of the profit from the Collaborate & Innovate conference—about \$1112.76. There were 18+ members of KY-SLA, as well as 8 from AALL—8, SE—8, PPL—8, Cincinnati—3, Legal—8, and “other”—3.

F. Directors-at-Large

Glenda Neely thanked everyone for the opportunity to serve.

(cont’d. on page 5)

Draft November Meeting Minutes (*cont'd. from page 3*)

G. Archivist/Governing Documents

No report.

H. Awards Committee Chair

No report.

I. Bulletin Editors

Sue Smith is working on latest issue of the Bulletin, and could use more articles and/or summaries about the different programs presented during the Collaborate & Innovate conference.

J. Discussion List Owner

No report.

K. Membership Committee Chair

No report.

L. Nominating Committee Chair

See new business.

M. Student Chapter Liaison

Mary Vass reported that she and Susan Brown had a meeting with the Student Chapter. Constance Ard, and Linda Minch, and Helene Davis spoke about their careers. About 25 students attended, and a couple of students followed-up with Linda.

N. Strategic Planning Chair

Valerie Perry sent word that she was sorry she could not make the conference and meeting. She will report at the next meeting. James Manasco said they may have a draft ready.

5. Old Business

A. Technology Grant from IT Division

Leoma said that we have this grant and need to use it for programming.

B. Blog for Chapter

Stacy Greenwell sent out an email about the new blog, and several people have been posting. We want to get the word out about it, and encourage others to contribute.

6. New Business

A.. Constance Ard made a motion to pay for Treasurer Leoma Dunn’s attendance at SLA national meetings in 2006, with Glenda Neely seconding. After some discussion, with input from James Manasco and Linda Minch, Constance amended the motion for the chapter to financially support the Treasurer every year, beginning in 2006, to attend Leadership Summit (with \$250) and SLA Annual meeting (with the amount of the Early Bird registration). Linda seconded, and the motion passed.

B. Update on KLA Board participation proposal

[See 4.C.]

(cont'd. on page 6)

Draft November Meeting Minutes *(cont'd. from page 5)*

C. KY-SLA officer election

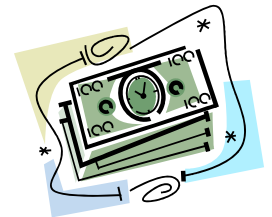
James Manasco presented the slate of officers from the Nominating Committee, which was approved. In accord with the new SLA rules, the new officers begin work January 1, 2007. The slate included: President, Susan Brown; President-Elect, Jan Berry; Treasurer, Leoma Dunn; Secretary, Valerie Perry; Director-at-Large, Alex Grigg.

7. Announcements and Adjournment

SLA’s Recruit-A-Member campaign is going on until 31 December 2006.

The South Africa trip, about which members received letters, is not an official SLA trip. The sponsoring group, People to People, is legitimate—the trip is just not officially sponsored by SLA.

James Manasco moved to adjourn; Leoma Dunn seconded. The meeting adjourned at 4:30 p.m.



Treasurer’s Report ~ Leoma Dunn

Spring Joint Conference 2006

March 29-31, 2006, Jenny Wiley State Park

Income

Proceeds	\$455.40
----------	----------

Total Income	\$455.40
---------------------	-----------------

Expenses

Speaker Fee/Expenses (Michael Stephens)	\$722.33
---	----------

Total Expenses	\$722.33
-----------------------	-----------------

Net Gain / (Loss)	(\$266.93)
--------------------------	-------------------

August Meeting

August 10, 2006, Midway KY

Income

Registration Fees	\$520.00
-------------------	----------

Total Income	\$520.00
---------------------	-----------------

Expenses

Holly Hill Inn	\$536.59
----------------	----------

Total Expenses	\$536.59
-----------------------	-----------------

Net Gain / (Loss)	(\$16.59)
--------------------------	------------------
